

AN ISO 9001:2015 CERTIFIED COMPANY

# Fitwell<sup>TM</sup>

## PIPING SYSTEMS

The Complete **Plumbing** Solution  
Under One Roof



cPVC Pipes & Fittings | uPVC Pipes & Fittings | SWR Pipes & Fittings  
Agriculture Pipes & Fittings | Service Saddle | MDPE Fittings | FRP Manhole Cover | PVC Faucet

**PRICE LIST**  
w.e.f. 1st Jul. 2024



## ABOUT Fitwell™ POLYTECHNIK Pvt. Ltd.

We are a group of 3 manufacturing company. The group slowly but steadily diversified and started the manufacturing of cPVC, uPVC, SWR, Agri Pipe & Fittings, CP Fittings, Brass Fittings & C.I, M.I, G.I Pipe Fittings, Forged Pipe Fittings. established its products successfully both in Indian & foreign markets.

Our group of company was established in 1998. We are one of the leading manufacturers of cPVC, uPVC, SWR, Agri Pipe & Fittings, CP Fittings, Brass Fittings & C.I, M.I, G.I Pipe Fittings, Brass Forged Pipe Fittings. The factory has the necessary facilities for casting & Injection molding according to international standard. Threading as per standard and up to date inspection of testing chemical and physical properties is undertaken. We are having a team of highly qualified and experienced engineers for quality maintenance & consistent research development efforts are made through rigid quality control tests.

**Fitwell™** Brand ISI pipe Fittings enjoy a good reputation for its quality and durability all over India & Abroad. It has the unique distinction of being sought after in Government departments, Municipal Corporations and oil & gas Plants. Our factory is equipped with the most up to date and sophisticated instruments for chemical and physical testing. The quality control is rigidly enforced through out the production process to ensure that the finished products are of the highest possible quality.

**Fitwell™** Brand ISI Pipe Fittings are dependable beyond doubt. These are also exported to various countries, On account of consistent Quality **Fitwell™** Brand ISI marked Pipe Fittings, Enjoy a great reputation in International Market With British International Organisation, Indian and American Standards.

Beautiful Design, Reliable Performance, Affordable Price.  
With **Fitwell™** You Get The Whole Package for Piping System.

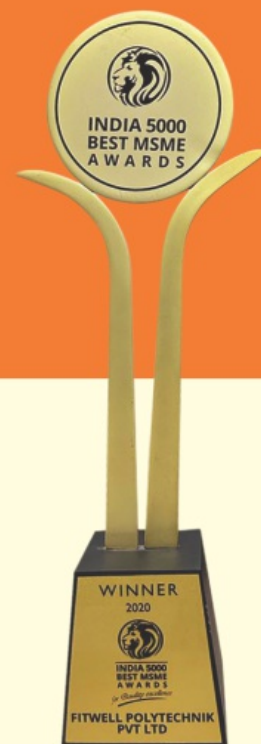
AN ISO 9001:2015 COMPANY



# WINNER-2020

## INDIA 5000 BEST MSME AWARDS

### FITWELL POLYTECHNIK PVT. LTD.





The Complete **Plumbing** solution

## SWR PIPES & FITTINGS

For Sewerage Waste & Rain Water

### Application :

- Sewage & Waste Water Lines.
- Rainwater Drainage.
- Residential Purpose.
- Industrial Use.
- Offices Purpose Use.



### PRODUCT FEATURES:



Light Weight



High Strength



UV Resistant



Effective Cost



Yellow Ring  
Co-Moulded Technology



Easy to Install



Leakproof Joints

## SWR (SEWERAGE WASTE & RAIN-WATER) FITTINGS (YELLOW RING FITTED)



**BEND 87.5°**

SIZE (MM)	BOX	M.R.P.
75	55	
90	60	
110	34	
160	-	



**BEND 87.5° (DOOR)**

SIZE (MM)	BOX	M.R.P.
75	45	
90	60	
110	28	
160	-	



**SHOE BEND 45°**

SIZE (MM)	BOX	M.R.P.
75	75	
90	80	
110	42	



**SINGLE TEE**

SIZE (MM)	BOX	M.R.P.
75	72	
90	40	
110	24	
160	-	



**SINGLE TEE (DOOR)**

SIZE (MM)	BOX	M.R.P.
75	51	
90	40	
110	20	
160	-	



**DOUBLE TEE**

SIZE (MM)	BOX	M.R.P.
75	50	
110	20	



**DOUBLE TEE (DOOR)**

SIZE (MM)	BOX	M.R.P.
75	40	
110	16	



**COUPLER**

SIZE (MM)	BOX	M.R.P.
75	90	
110	60	
160	-	



**SINGLE Y**

SIZE (MM)	BOX	M.R.P.
75	50	
110	20	



## SWR (SEWERAGE WASTE & RAIN-WATER) FITTINGS (YELLOW RING FITTED)



**SINGLE Y (DOOR)**

SIZE (MM)	BOX	M.R.P.
75	45	
110	17	



**DOUBLE Y**

SIZE (MM)	BOX	M.R.P.
75	35	
110	11	



**DOUBLE Y (DOOR)**

SIZE (MM)	BOX	M.R.P.
75	26	
110	10	



**REDUCER**

SIZE (MM)	BOX	M.R.P.
110 X 75	64	



**REDUCER TEE**

SIZE (MM)	BOX	M.R.P.
110 x 75	33	
160 x 90	-	
160 x 110	-	
160 x 140	-	



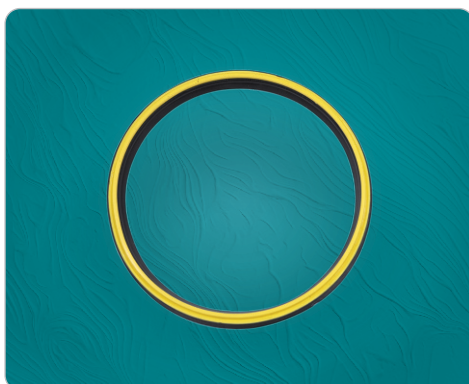
**REDUCER TEE (DOOR)**

SIZE (MM)	BOX	M.R.P.
110 X 75	24	



**CLEANSING PIPE**

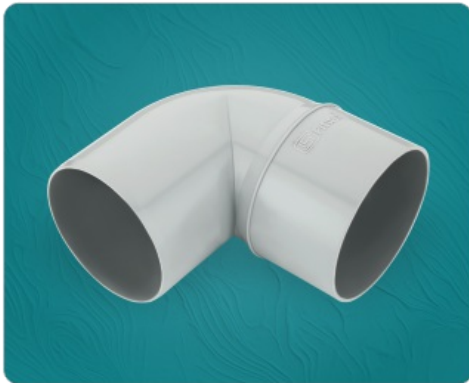
SIZE (MM)	BOX	M.R.P.
75	96	
110	32	



**PP SWR RING (Fix M.R.P.)**

SIZE (MM)	BOX	M.R.P.
75	1000	
110	500	

**SWR (SEWERAGE WASTE & RAIN-WATER) FITTINGS (SELF FIT)**



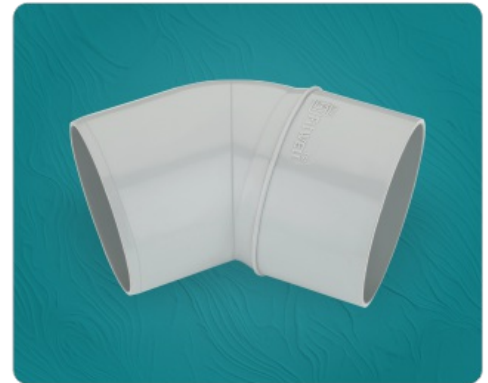
**BEND 87.5°**

SIZE (MM)	BOX	M.R.P.
75	55	
90	60	
110	36	
160	-	



**BEND 87.5° (DOOR)**

SIZE (MM)	BOX	M.R.P.
75	45	
90	60	
110	32	
160	-	



**SHOE BEND 45°**

SIZE (MM)	BOX	M.R.P.
75	75	
90	80	
110	44	



**SINGLE TEE**

SIZE (MM)	BOX	M.R.P.
75	72	
90	40	
110	24	
160	-	



**SINGLE TEE (DOOR)**

SIZE (MM)	BOX	M.R.P.
75	60	
90	40	
110	24	
160	-	



**DOUBLE TEE**

SIZE (MM)	BOX	M.R.P.
75	50	
110	20	



**DOUBLE TEE (DOOR)**

SIZE (MM)	BOX	M.R.P.
75	40	
110	16	



**COUPLER**

SIZE (MM)	BOX	M.R.P.
75	90	
110	60	
160	-	



**SINGLE Y**

SIZE (MM)	BOX	M.R.P.
75	50	
110	21	



## SWR (SEWERAGE WASTE & RAIN-WATER) FITTINGS (SELF FIT)



**SINGLE Y (DOOR)**

SIZE (MM)	BOX	M.R.P.
75	45	
110	17	



**DOUBLE Y**

SIZE (MM)	BOX	M.R.P.
75	35	
110	11	



**DOUBLE Y (DOOR)**

SIZE (MM)	BOX	M.R.P.
75	26	
110	10	



**REDUCER**

SIZE (MM)	BOX	M.R.P.
110x75	64	



**REDUCER TEE**

SIZE (MM)	BOX	M.R.P.
110 x 75	33	
160 x 90	-	
160 x 110	-	
160 x 140	-	



**REDUCER TEE (DOOR)**

SIZE (MM)	BOX	M.R.P.
110x75	24	



**CLEANSING PIPE**

SIZE (MM)	BOX	M.R.P.
75	96	
110	32	



**PIPE CLIP**

SIZE (Inch)	BOX	M.R.P.
75	500	
110	300	



**DOOR CAP**

SIZE (MM)	BOX	M.R.P.
75	200	
110	150	

## SWR (SEWERAGE WASTE & RAIN-WATER) FITTINGS



**P-TRAP**

SIZE (MM)	BOX	M.R.P.
110x110	18	
125x110	18	



**S-TRAP**

SIZE (MM)	BOX	M.R.P.
110x110	15	
125x110	15	



**Q-TRAP**

SIZE (MM)	BOX	M.R.P.
110x110	17	
125x110	17	



**SWR MULTI FLOOR TRAP**

SIZE (MM)	BOX	M.R.P.
110x75	35	



**VENT COWL**

SIZE (MM)	BOX	M.R.P.
75	275	
110	220	



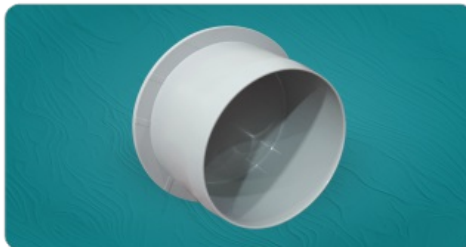
**JALI**

SIZE (MM)	BOX	M.R.P.
75	-	
110	400	



**NAHANI TRAP**

SIZE (MM)	BOX	M.R.P.
110x75	55	
110x90	45	
110x110	40	



**SOCKET PLUG**

SIZE (MM)	BOX	M.R.P.
40	-	
50	-	
63	-	
75	120	
90	-	
110	80	

## SWR PIPES



**FITWELL SWR PIPES (A-TYPE) LIGHT**

SWR PIPE 10Ft. R/S, S/S.

SIZE	M.R.P.
75 MM	
110 MM	
160 MM	



**FITWELL SWR PIPES (B-TYPE) HEAVY**

SWR PIPE 10Ft. R/S, S/S.

SIZE	M.R.P.
75 MM	
110 MM	
160 MM	



*One Stop for multiple plumbing solution under one roof*



cPVC Pipes & Fittings | uPVC Pipes & Fittings | SWR Pipes & Fittings  
Agriculture Pipes & Fittings | Service Saddle | MDPE Fittings | FRP Manhole Cover | PVC Faucet

**Fitwell<sup>TM</sup>**  
**PIPING SYSTEMS**

AN ISO 9001:2015 COMPANY



Dealer / Distributor :

Mfg. & Mktg. By :

**FITWELL POLYTECHNIK PVT. LTD.**

Gujarat - India.



मेक इन इंडिया



एक कदम स्वच्छता की ओर